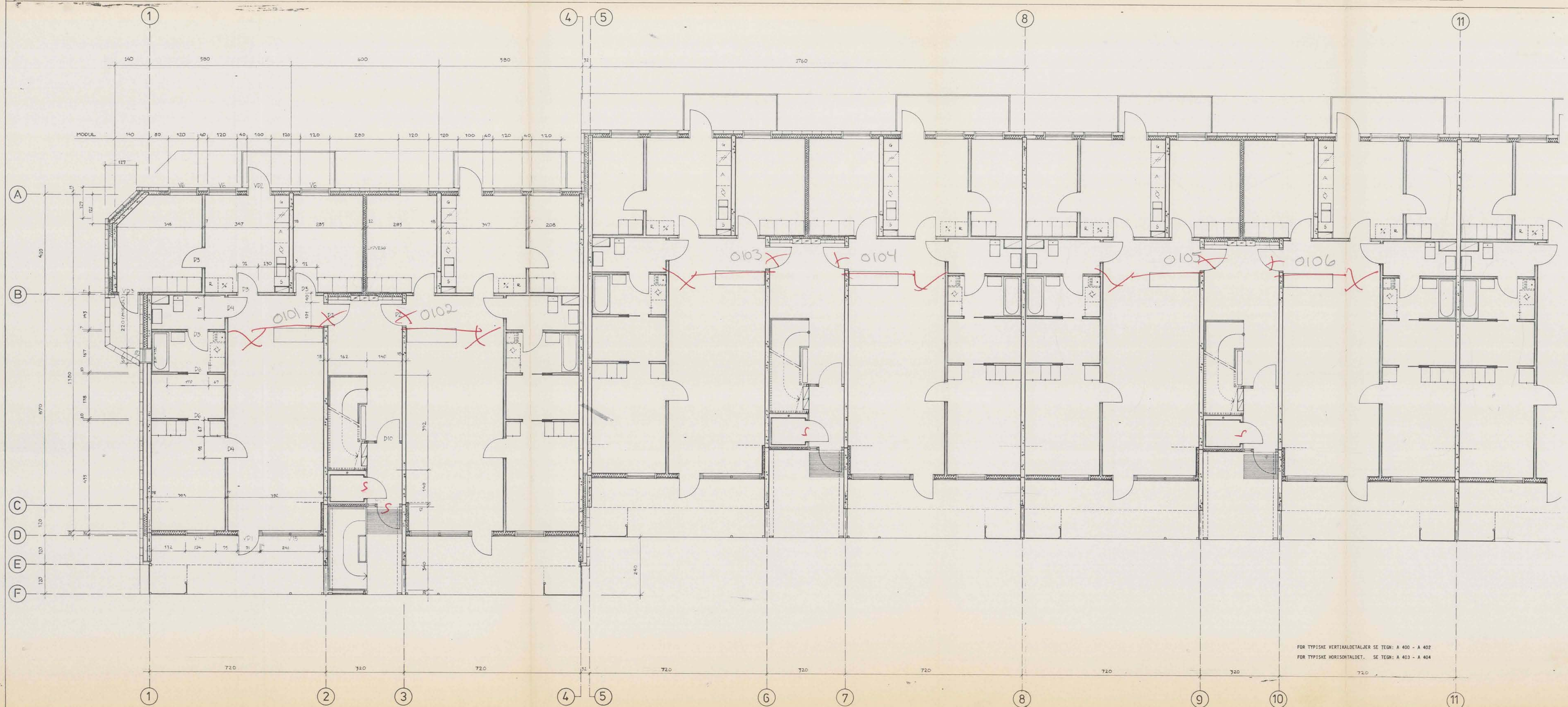


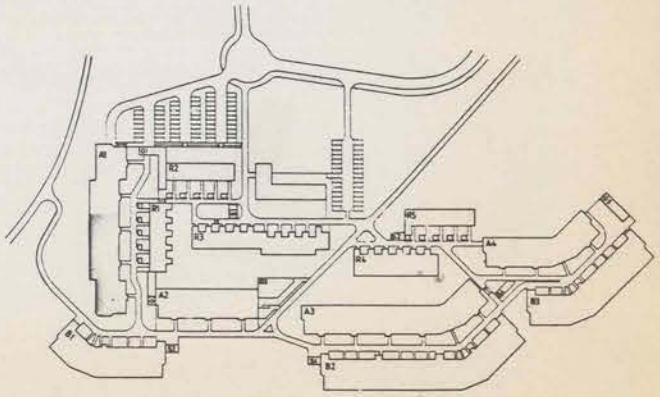
MOTTATT
12. OCT. 1987
Oslo Bygningstrol



FOR TYPISKE VERTIKALDETALJER SE TEGN: A 400 - A 402
FOR TYPISKE HORIZONTALDET. SE TEGN: A 403 - A 404

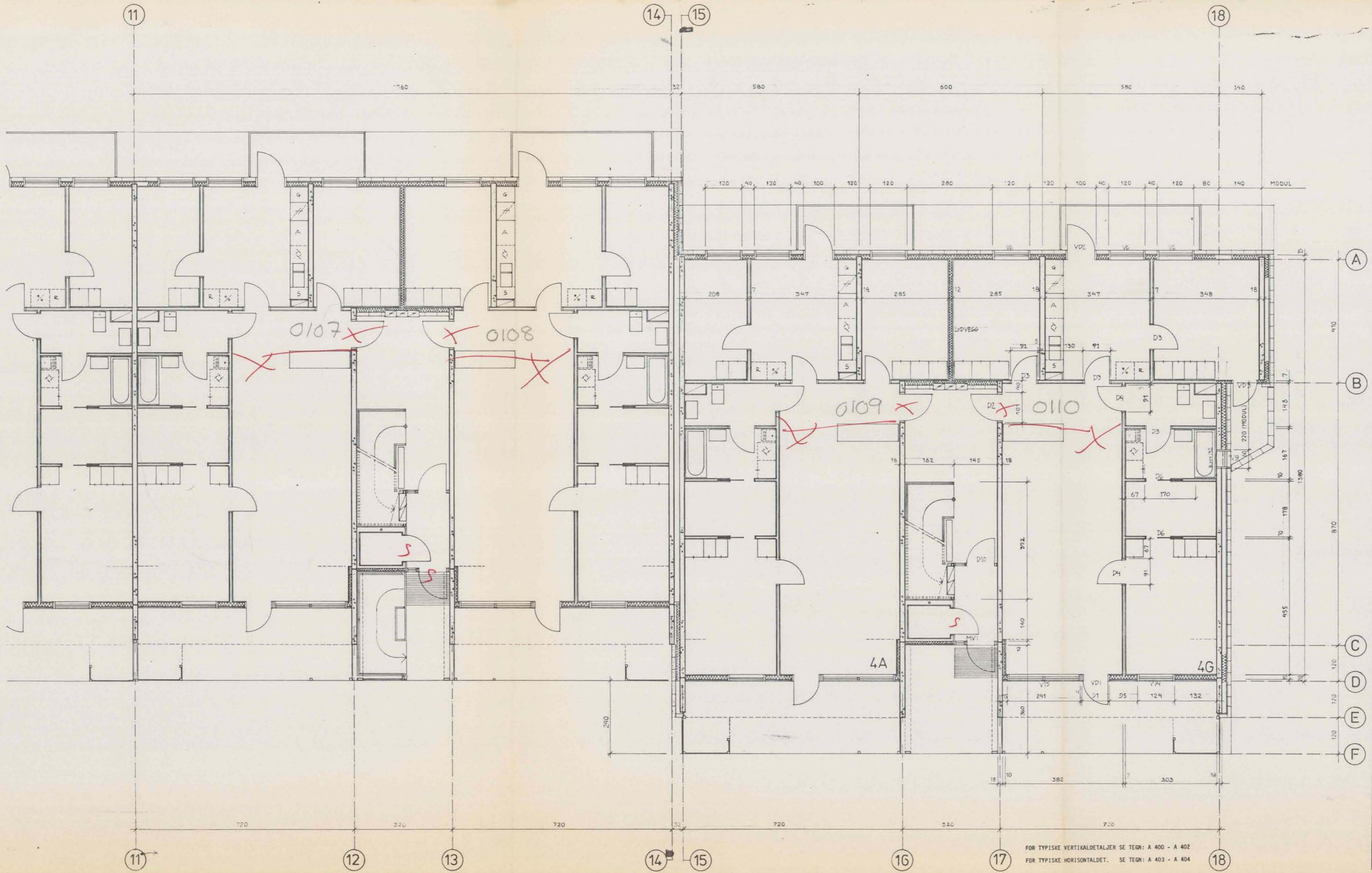
6

| | | |
|------|-------------|-------|
| REV. | BESKRIVELSE | SIGN. |
| | ANBUD | |

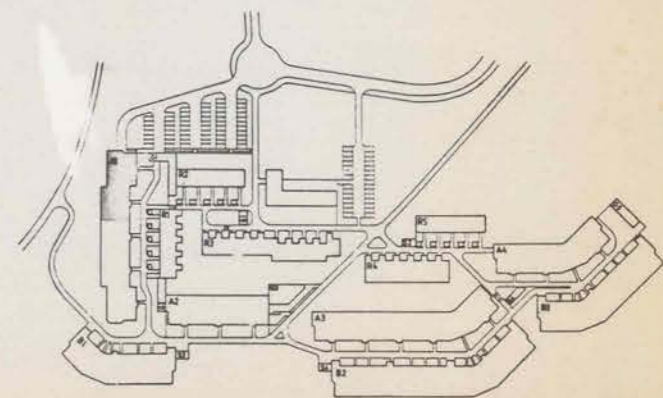


| | | | |
|---------------------------------------|--------------------------|---|----------|
| | KLEMETSROD VEST | DATO: 1/10-87 | REV. |
| | (A1) PLAN 1. ETG. DEL 1. | MÅL: 1:100 | SIG. JDM |
| | TEGN: A 102 | | |
| ALEX CHRISTIANSEN ARKITEKTKONTOR A.S. | | SKJOLDEN 1 - 1310 BLOMMEHOLM T. 54 22 58 | |

MOTTATT
12. OCT. 1987
Oslo Bygningstent



| REV | BESKRIVELSE | SIÓN |
|-----|-------------|------|
| | ANBUD | |



| | | | |
|---|-------------------------|---------------|----------|
| | KLEMETSROD VEST | DATO: 1/10-87 | REV. |
| | (A1) PLAN 1. ETG. DEL 2 | MÅL: 1:100 | SIG. JDM |
| | TEGN. A 103 | | |
| ALEX CHRISTIANSEN ARKITEKTKONTOR A.S. SKJOLDEN 1 - 1310 BLOMMEHOLM 54 22 58 | | | |

FOR TYPISKE VERTIKALDETALJER SE TEGN: A 400 - A 402
FOR TYPISKE HORIZONTALDET. SE TEGN: A 403 - A 404